

# MEETINGS + EVENTS



RIVIERA

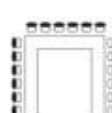
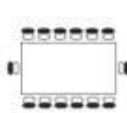
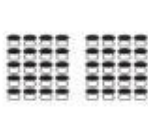
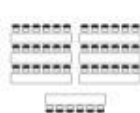


## AT A GLANCE GUIDE

Located in the prestigious Alum Chine, The Riviera is a stylish venue with elegant interiors. The Riviera boasts five bright, spacious event spaces that feature natural daylight and air-conditioning with complimentary WIFI. Our events team will help organise your event, from your initial enquiry to liaising with our team, to ensure that your event is a great success. To complement your event, your delegates can relax, unwind and reflect in our breakout lounge, where they can enjoy refreshment breaks with nutritious snacks, or enjoy delicious healthy lunches.

A dedicated events co-ordinator will be assigned to your event and will assist with the following plus any other reasonable request

- Take initial enquiry
- Provide full quotation
- Prepare & send contracts
- Liaise with all departments to ensure meeting is a success
- To greet clients on the day of arrival
- To ensure meeting runs smooth
- Contact after the event for any feedback



Riviera Hotel	Theatre	Cabaret	Classroom	Boardroom	U Shape	Dinner Dance	Banquet
Mauretania	160	130	100	60	50	160	180
Britannic	70	50	40	40	30	60	70
Caledonia	10	12	8	20	10	--	30
Cunarder Restaurant	200	180	--	--	--	250	250
The Bridge Bar	80	50	--	--	--	90	--



# THE MAURETANIA SUITE

Our largest conference room is situated on the lower ground floor with level access, private external entrance from the car park and cloakroom, is climate controlled has its own bar (if required), toilets & a mobility access toilet (situated in the lobby).

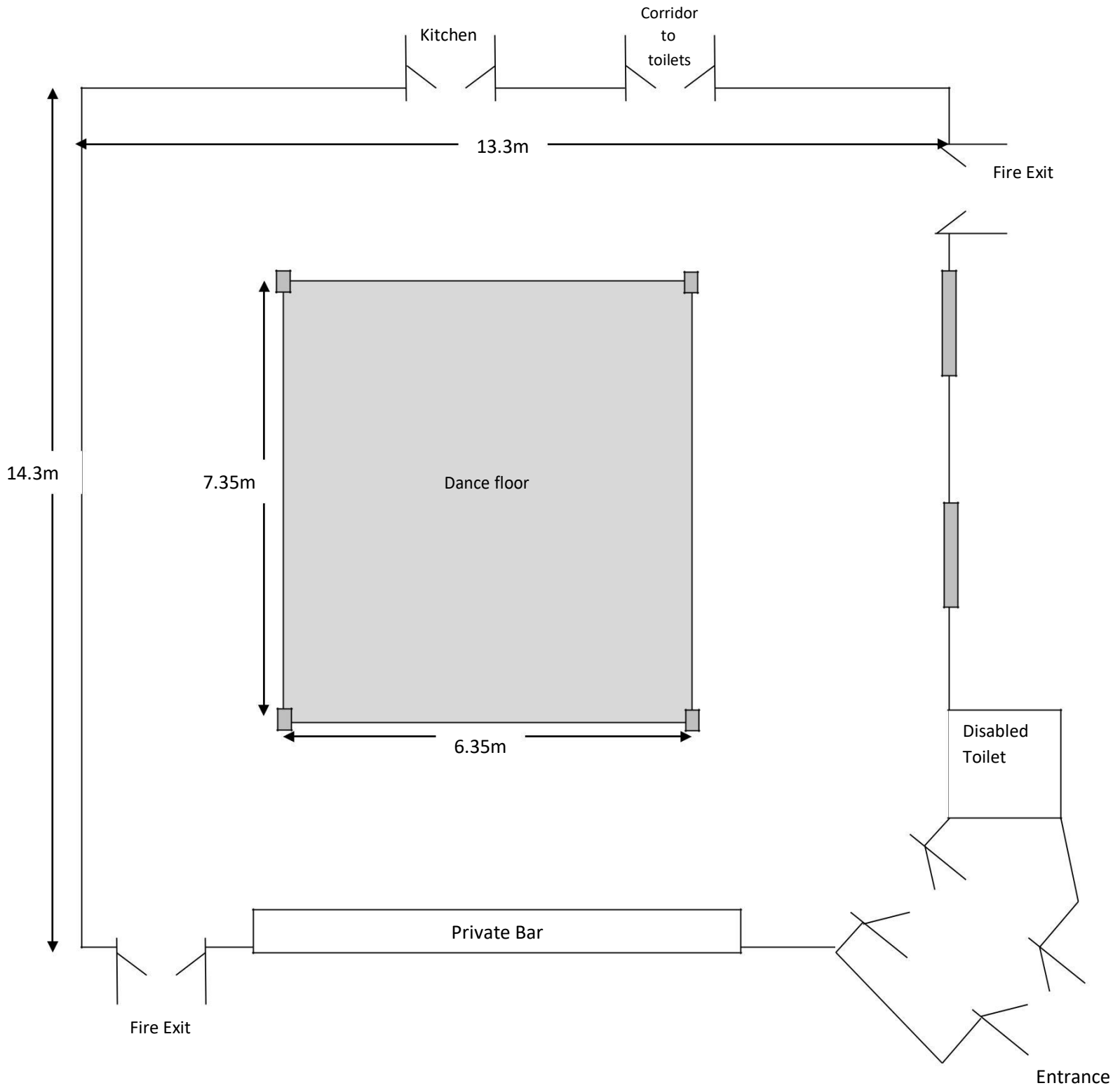
This room has the capacity to accommodate up to 200 people. Ideal for Christmas parties, Wedding receptions & Birthday Parties as well as Conferences and Meetings.

- ✓ Natural Daylight
- ✓ Air-Conditioning
- ✓ Heating
- ✓ Wi-Fi
- ✓ Hearing Loop
- ✓ Projector & Screen
- ✓ External Entrance
- ✓ Step-free Access





# THE MAURETANIA SUITE







# THE BRITANNIC SUITE

Situated on the ground floor, this is a room with lots of natural light this is a favourite for small intimate parties and meetings.

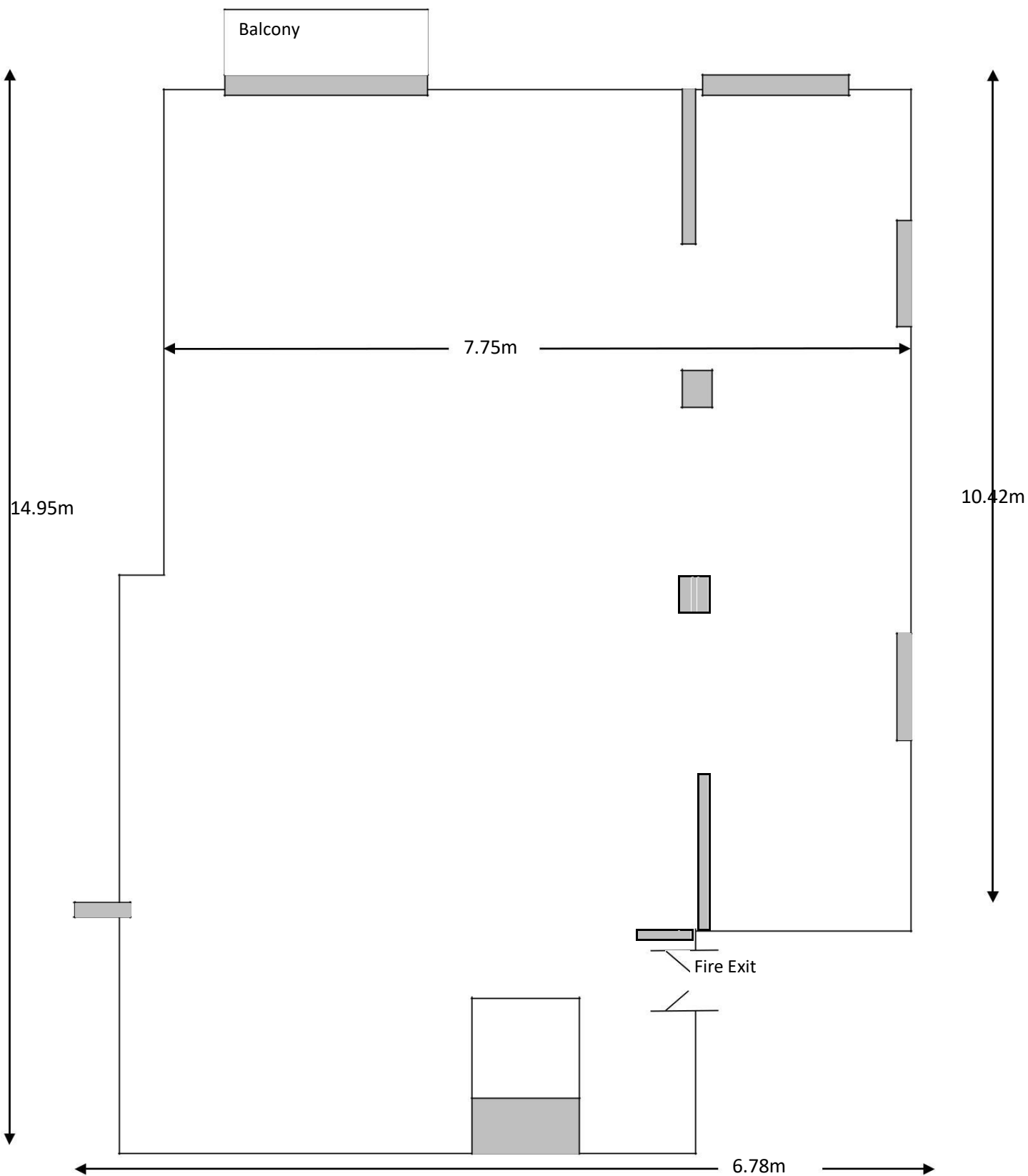
The smaller of the function rooms which benefits from its close proximity to the main hotel's facilities whilst still remaining private and quiet.

- ✓ Natural Daylight
- ✓ Air-Conditioning
- ✓ Heating
- ✓ Wi-Fi
- ✓ Projector & Screen
- ✓ Step-free Access (via mobility lift)





# THE BRITANNIC SUITE





# ≡ DAY DELEGATE RATE ≡

2021: £26.00pp/2022: £27.00pp

All our meeting rooms can be set up for specific requirements depending on occupancy. Each room will be set to your specification to include comfortable chairs, glasses and fresh water.

- ✓ Room hire
- ✓ Equipment (data projector, screen, flipchart & pens)
- ✓ Fruit bowl
- ✓ Jugs of iced water
- ✓ Bacon sandwiches on arrival
- ✓ Unlimited tea/coffee/biscuits
- ✓ Hot and cold buffet lunch
- ✓ Homemade cakes with the afternoon break
- ✓ Meeting sweets
- ✓ High speed Wi-Fi

Our dedicated and professional team at the hotel, ensure that all events are hassle free, from the initial enquiry through to the event itself which is why many companies & associations return to us year after year.







# MEETING RATES

## Special Day Delegate Rate:

**From: £21.00pp (2021) or £22.00pp (2022)**

- ✓ Room hire
- ✓ Equipment (data projector, screen, flipchart & pens)
- ✓ Jugs of iced water
- ✓ 3 servings of tea/coffee/biscuits
- ✓ Sandwich lunch
- ✓ High speed Wi-Fi

## Room Hire Only:

Mauretania suite full day - £375.00

Mauretania suite half day - £275.00

Britannic suite full day - £350.00

Britannic suite half day - £250.00

Add tea/coffee/biscuits - £1.50 per person per serving







# ≡ 24 HOUR DELEGATE RATE ≡

FROM £99.00

- ✓ Room hire
- ✓ Equipment (data projector, screen, flipchart & pens)
- ✓ Fruit bowl
- ✓ Jugs of iced water
- ✓ Bacon sandwiches on arrival
- ✓ Unlimited tea/coffee/biscuits
- ✓ Hot and cold buffet lunch
- ✓ Homemade cakes with the afternoon break
- ✓ Meeting sweets
- ✓ Overnight accommodation
- ✓ Full English breakfast
- ✓ 3 course dinner
- ✓ Access to The Coast Spa, indoor pool & gym
- ✓ High speed Wi-Fi





## ≡ LEISURE FACILITIES ≡

Whether you want a vigorous workout or just to relax and rejuvenate, you will find our Leisure Club invigorating. How about a pre-meeting dip in the indoor swimming pool, a reviving soak in the bubbling spa bath or an invigorating session in the studio GYM?

The Riviera Hotel in Bournemouth offers:

- ✓ 10m x 4m Heated Indoor Swimming Pool
- ✓ Studio gym with cross trainer, treadmill, exercise bike, dumbbells with weights bench and air-conditioning
- ✓ Spa Bath
- ✓ Shower and changing rooms
- ✓ Relaxation room
- ✓ Public gardens
- ✓ **Open daily 7am – 9pm**

All delegates will have access to our leisure facilities with a free day-pass on the day of their meeting.

Day Pass - £10 per adult





# ≡ ACCOMODATION ≡

The Riviera Hotel is one of the finest Bournemouth Hotels due partly to its ideal location. Add to your Bournemouth experience by falling asleep each night to the blend of fresh sea air and sweet pine scent from the wooded Alum Chine in one of our 67 comfortable bedrooms which all have the following facilities:

- ✓ Wide screen digital TV's with Freeview channels
- ✓ Free WIFI
- ✓ Hair dryer
- ✓ Desk lamp
- ✓ Writing desk
- ✓ Tea and Coffee making facilities
- ✓ Hypoallergenic Duvets
- ✓ Complimentary tea/coffee tray
- ✓ En-suite bathroom with shower over bath and complimentary toiletries
- ✓ Free car parking
- ✓ Iron and ironing board on request
- ✓ Fans on request
- ✓ Room Service available 24 hours

All this makes the Riviera the perfect place to stay for visiting delegates. Rates are available upon request.







# APARTMENTS

The Riviera Holiday Apartments provide the comfort, privacy and freedom of your own home with all the services of a hotel.

These self-catering apartments are in an ideal location close to both Bournemouth and Poole. Residents may use all hotel facilities including bar and restaurants, indoor swimming pool, spa bath, studio gym, Coast Spa treatments, large garden and terrace areas and free WI-FI.

Our 12 self-catering apartments are an excellent alternative to bedrooms and sleep from 1 to 6 people, all the apartments have a lounge with direct dial telephone, large flat screen TV, dining area, kitchen with cooker, microwave and fridge. Free parking is available on the forecourt and there is a lift to all floors – though there are ten steps up to the front door. Services such as 24-hour laundry are available on request.







# HOT + COLD FORK BUFFET

Your Day Delegate Rate includes a magnificent spread in the form of our renowned hot & cold fork buffet which can be served either in your meeting room or in our Cunarder & Conservatory Restaurant.

## **To Start...**

A Selection of Cold Meats, Fruits, Cheeses & Salads

## **Main Courses...**

*Please select three options*

Chilli Con Carne  
Battered Cod & Lemon  
Cod, Salmon & Prawn Potato Pie  
Beef & Mushrooms in Red Wine  
Pork with Pineapple & Cashew Nuts  
Chicken & Vegetable with Coconut, Lemongrass & Chilli Cream  
Turkey Ham & Apricot Pie  
Lamb Rogan Josh & Poppadoms  
Oriental BBQ Chicken Pieces  
Vegetable & Salsa Pasta Bake  
Quorn & Vegetable Balti  
Mixed Bean & Vegetable Nachos  
Broccoli, Potato & Cream Cheese Bake  
Vegetable Lasagna

## **Accompanied by a selection of two of the following:**

*Rice, Chips, New Potatoes, Sauté Potatoes, Noodles, Tortilla Chips, Jacket Potatoes, Spicy Potato Skins, Salads*

## **Followed by a selection of desserts**

If you have your own ideas – please do let us know!



## CUNARDER + CONSERVATORY RESTAURANT

Situated right at the heart of Alum Chine, the Cunarder & Conservatory Restaurant provides a contemporary take on a traditional British menu, which is adjusted accordingly with the seasons. The restaurant is smartly decorated, bathed in natural light and boasts fantastic sea views. The Cunarder & Conservatory Restaurant is open to the public throughout the year.

The Cunarder & Conservatory Restaurant is open every day to hotel residents and members of the public for Breakfast and Dinner. The menus are modern British – European with a focus on local seasonal produce, fine ingredients and tasty, delicious dishes. We are confident you will leave us impressed and planning to return.

The Cunarder & Conservatory Restaurant is also an ideal venue for group lunches, wine tasting, private events and functions.

## THE BRIDGE BAR & GRILL

Local bar with lovely views of Alum Chine and Bournemouth Bay.

Enjoy a quiet drink in The Bridge Bar & Grill. Designed in Art Deco style you can sit back and take in the lovely views over the woods of Alum Chine and far out to sea.

The Bridge Bar & Grill offers tasty snacks and light meals including our homemade pizzas from midday until 10pm every day! Additionally, coffees and Afternoon Tea are also served in the bar throughout the day.

In fine weather, why not take your drinks and enjoy them under the umbrellas on the upper sun terrace or on our lawned garden area, complete with sun loungers for you to catch some rays, a selection of garden games and a giant deckchair.





# ≡ VERSATILITY ≡

Here at The Riv, we don't just offer meeting space, whether you are celebrating a special occasion for 2, or hosting a lavish party of 200, We have various function spaces that can cater for your requirements. The flexibility of our event rooms ensures each event is bespoke – from decorating our suites in whatever style you choose, to selecting the menus, our dedicated and friendly staff will be on hand to take care of your every need.

With its exclusive location, fine food and exceptional personal service, The Riviera at Alum Chine has an excellent reputation for hosting events. From private dinners to celebrate that special occasion or a cocktail party offering private bar service and canapés.

A variety of flexible rooms can be adapted to create the perfect event. Impeccable attention to detail along with a delicious selection of fine food and wines all add to the recipe of our event success.







## CHRISTMAS PARTIES

Looking to book your office Christmas party?

What better place to celebrate the end of a busy year with your friends or colleagues than at The Riviera Hotel Bournemouth.

Hosting over 5000 party guests each year, we offer one of the best and most popular **Christmas Party** deals in Bournemouth and Poole and we are passionate about making your event a success!

**ALL Christmas Parties include:**

- ✓ **Red Carpet Welcome**
- ✓ **Crackers and Novelties**
- ✓ **Christmas Theme Dinner**
- ✓ **Disco with our resident DJ till 1.00am**
- ✓ **Bar Promotions**







## CONTACT INFORMATION

### **The Riviera Hotel & Holiday Apartments Bournemouth**

14-16 Burnaby Rd  
Bournemouth  
BH4 8JF

T: +44 (0)1202 763653

### **HOW TO FIND US**

#### **By Car:**

Take the A338 to approach Bournemouth and stay on it (passing the Bournemouth exits) right to its end at the Traffic Lights opposite the “Liverpool Victoria” roundabout / County Gates Gyratory. Take the 2nd exit off the roundabout (following the bucket and spade signs painted on the road), turning left into The Avenue, lined with rhododendrum bushes. At the Traffic Lights, turn left. At the mini roundabout, turn right into Alumhurst Road. Drive about a mile along Alumhurst Road and as soon as you can see the sea straight ahead through a big tree, turn left into Crosby Road, and you will see our sign at the end of the road.

From the west – take the A35, The A35 will become the A350 near Poole. At the roundabout take the second exit onto the A3049 towards Bournemouth. At the Tower Park roundabout, continue onto Old Wareham Road, then take the first exit on the next roundabout to Ringwood road. Follow Ringwood road, go through one roundabout, then at the next take the second exit onto Herbert Ave. Turn right onto Alder road, then take the first exit at the roundabout onto Ashley road. Continue straight onto the A35. Continue on The Avenue, then take Alumhurst road to Crosby road. You will see the Riviera sign ahead of you!

#### **By Train:**

Bournemouth Station is a 15 minute taxi ride from the hotel. The taxi rank is directly outside the station. The fare is around £8.00.

#### **By Coach:**

Bournemouth is linked by National Express Coach with many other towns. The Coach station is opposite the railway station, where the taxis rank is.

#### **By Bus:**

Alum Chine is served by the Number 2A or 2B Yellow Bus, which goes (via Westbourne) to the Town Centre and the Train/Coach Station. Alternatively, Westbourne is well served by frequent buses between Bournemouth and Poole.

**For all meetings and events bookings, please contact our events team:**

[events@rivierabournemouth.co.uk](mailto:events@rivierabournemouth.co.uk)